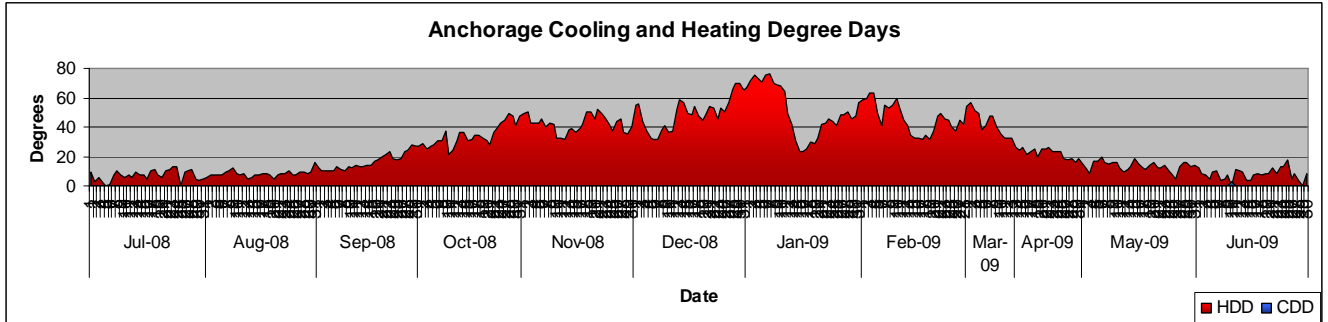
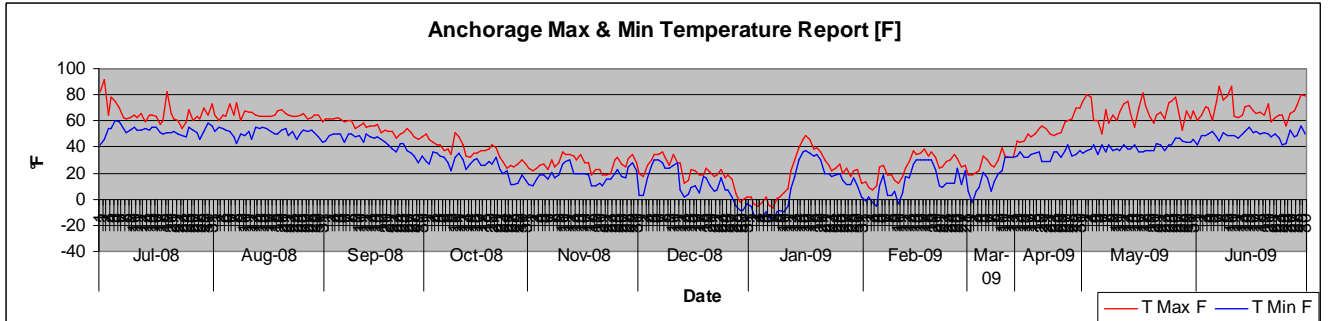


Anchorage, AK

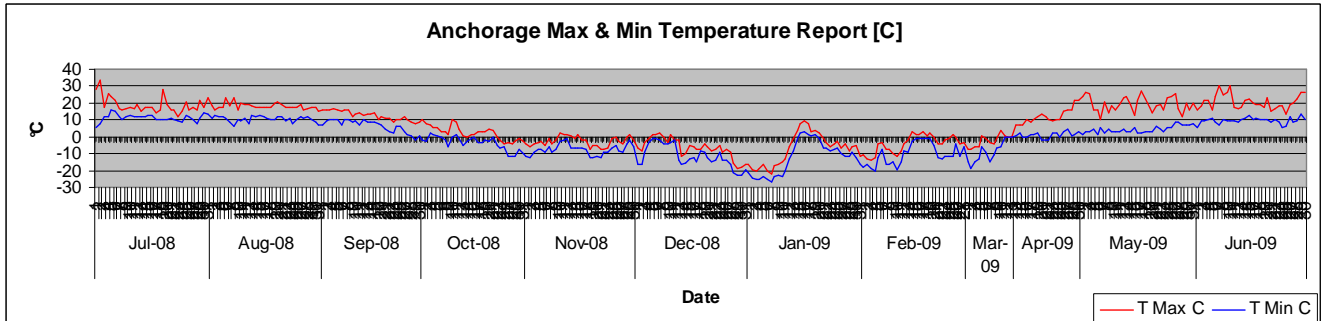
Weather Charts



Avg. T°[F] per month



Avg. T°[C] per month



Weather Breakdown

Month/Yr	hrs/yr <46[F]	Avg[F] <46[F]	hrs/yr <60[F]	Avg[F] <60[F]	HDD/yr	CDD/yr	hrs/yr >65[F]	Avg[F] >65[F]	hrs/yr >75[F]	Avg[F] >75[F]
			7,560	36						
Month	hrs <46 [F]	Avg[F] <46	hrs <60 [F]	Avg[F] <60	HDD	CDD	hrs >65 [F]	Avg[F] >65	hrs >75 [F]	Avg[F] >75
Jul-2008	0		600	57	217	0	0		0	
Aug-2008	0		720	57	239	0	0		0	
Sep-2008	168	41	648	49	436	0	0		0	
Oct-2008	672	31	672	31	954	0	0		0	
Nov-2008	720	23	720	23	1,263	0	0		0	
Dec-2008	720	16	720	16	1,484	0	0		0	
Jan-2009	744	14	744	14	1,577	0	0		0	
Feb-2009	672	19	672	19	1,283	0	0		0	
Mar-2009	312	22	312	22	558	0	0		0	
Apr-2009	312	41	432	43	401	0	0		0	
May-2009	24	45	744	52	416	0	0		0	
Jun-2009	0		576	56	232	3	24	68	0	

The City Heating Season chart depicts the normal months of the year when your sites heating system is in operation. It is not unusual in many areas of the country that your normal site heating system may operate prior to October or after May. When the AMS Waste Heat Recovery Unit is in operation will be up to the individual site regulated by temperature setting.

City Heating Season		
Heating Mo's	Hr's ≤60F ^o	Avg F ^o ≤60
Oct-2008	672	31
Nov-2008	720	23
Dec-2008	720	16
Jan-2009	744	14
Feb-2009	672	19
Mar-2009	312	22
Apr-2009	432	43
May-2009	744	52
Total	5,016	27

Cost Savings

These are examples only. There are many variables that affect the actual outcomes. These would include GPM, temperature of incoming liquid and make-up, fan cfm, size restrictions, current cost of current heating fuel and type of plant heat used. Each AMS Waste Heat Recovery Package Unit is tailor designed to your specific site and needs so that we get the most MMBTU's from your waste heat, heat that is currently going out the stack. Many times, depending upon a sites waste heat availability, multiple units can be deployed multiplying the savings.

Fuel cost/unit	\$7.5000
Fuel BTU/unit	1000000
Efficiency rating of heater	65.00%
Total effective cost of heat in MMBTU**	\$11.54

Example 1:

MMBTU/hr	0.430
hrs ambient temp <60 deg F/yr	7560
Cost of heat/MMBTU**	\$11.54
Total savings/yr	\$37,509.23

Example 2:

MMBTU/hr	0.713
hrs ambient temp <60 deg F/yr	7560
Cost of heat/MMBTU**	\$11.54
Total savings/yr	\$62,195.54

**Cost of heat in MMBTU: Assumption: Gas Fuel Steam Heat at \$7.50/unit